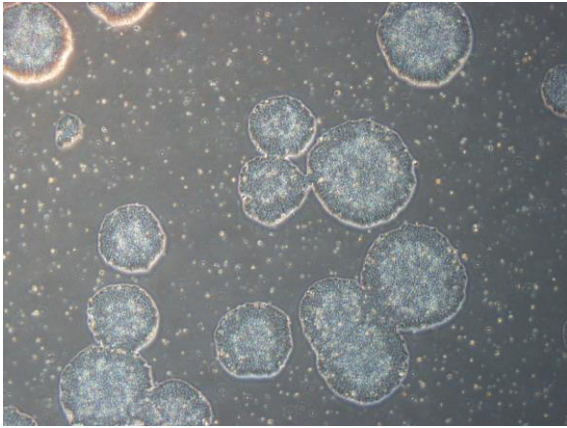
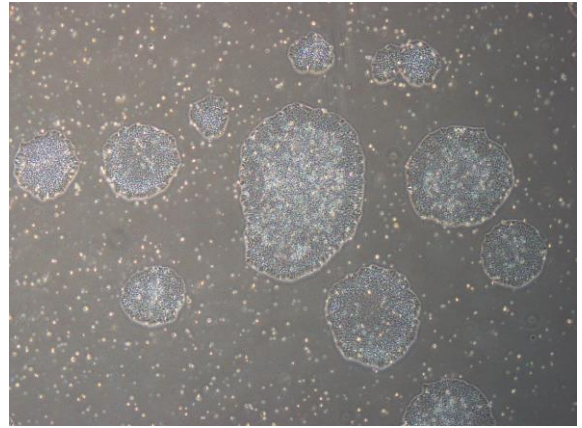


【 CiRA-j-1481 】 Morphology of iPSC colonies

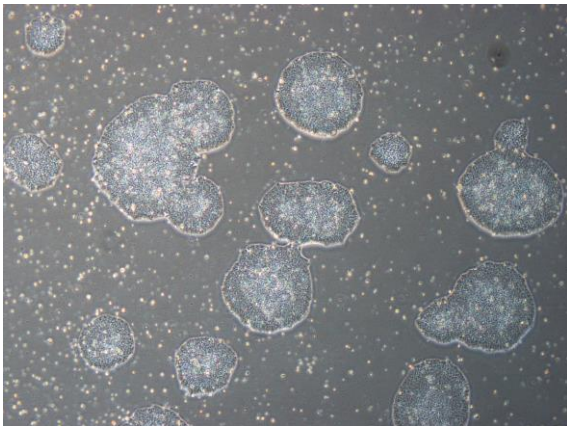
CiRA-j-1481-A: passage-3



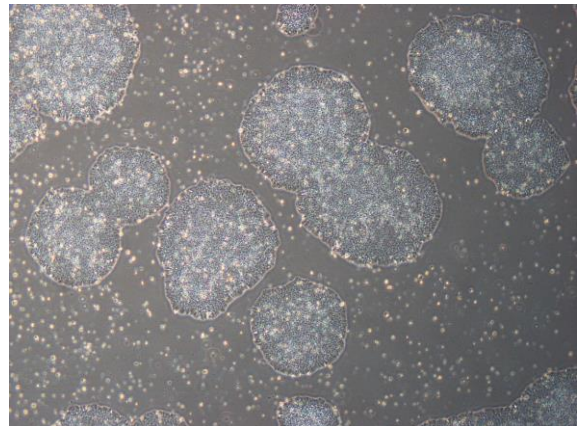
CiRA-j-1481-B: passage-3



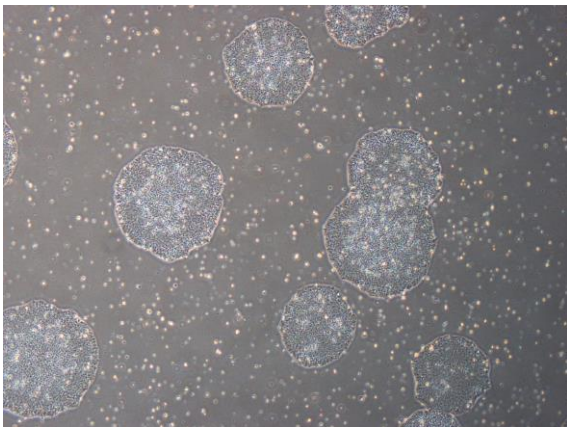
CiRA-j-1481-C: passage-3



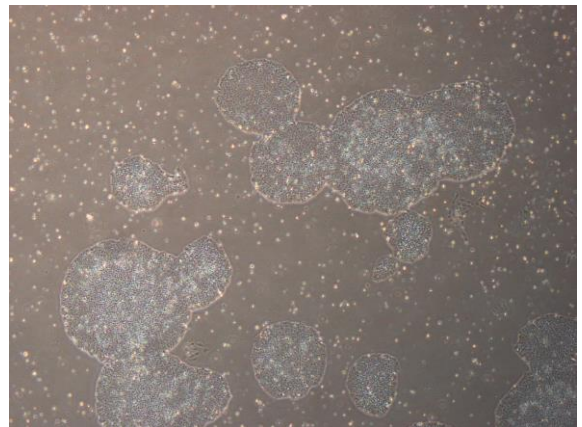
CiRA-j-1481-D: passage-3



CiRA-j-1481-E: passage-4



CiRA-j-1481-F: passage-3



(All images were captured at 4x magnification)